

Newsletter Submission - September

CRS 4.3.9 was released on July 30, 2015.

POS Revenue and Collections Summary

Summary Report Update

Drill-down reports available through the following sections of the Summary report now include a new column:

- POS Revenue by Profit Center
- Non Liability POS Revenue
- Liability Redemptions by Profit Center
- Liability Payment/Redemption Summary (available for redemptions only)
- POS Revenue Summary

The **Sales Item** column has been added to these drill-down reports, as displayed below.

Sales Date	Sales Amount	Sales Item
07/11/2015	\$2.94	LENNY AND LARRY WHITE CHOC MAC COOKIE
07/17/2015	\$2.75	LENNY AND LARRY OATMEAL RAISIN COMPLETE COOKIE
07/24/2015	\$2.95	LENNY AND LARRY WHITE CHOC MAC COOKIE
07/15/2015	\$2.75	COMPLETE COOKIE SNICKERDOODLE
07/12/2015	\$3.75	QUEST BAR- MINT CHOCOLATE CHUNK
07/15/2015	\$2.75	COMPLETE COOKIE SNICKERDOODLE
07/15/2015	\$2.75	COMPLETE COOKIE SNICKERDOODLE
07/14/2015	\$2.75	COMPLETE COOKIE SNICKERDOODLE
07/09/2015	\$2.75	COMPLETE COOKIE SNICKERDOODLE
07/09/2015	\$2.68	IMPACT BARS CHOC PEANUT
07/18/2015	\$2.68	IMPACT BARS CHOC PEANUT
07/13/2015	\$2.68	IMPACT BARS CHOC PEANUT
07/07/2015	\$2.68	IMPACT BARS CHOC PEANUT
07/06/2015	\$2.68	IMPACT BARS CHOC PEANUT
07/02/2015	\$2.68	IMPACT BARS CHOC PEANUT
		\$75.27
		\$75.27



Daily Revenue and Deposit Reconciliation

Report Updates

The Daily Revenue and Deposit Reconciliation report has been updated.

Journal Entries

Previously, sales tax was included in revenue totals. The report has been updated so that revenue does not include sales tax; **Sales Tax Liability** will account for sales tax owed. **Sales Tax Expense** has been eliminated from the report.

Account Description	Dr.	Cr.	Entry Description	Account Description	Dr.	Cr.	Entry Description
Revenue		\$118.26	ACCESSORIES	Revenue		\$115.42	ACCESSORIES
Revenue		\$4,966.17	ANNUAL	Revenue		\$4,641.21	ANNUAL
Revenue		\$431.60	BARS	Revenue		\$408.51	BARS
Revenue		\$50.00	CANCEL	Revenue		\$50.00	CANCEL
Revenue		\$26.03	CHILDCARE	Revenue		\$26.03	CHILDCARE
Revenue		\$10.69	CLASSES	Revenue		\$10.69	CLASSES
Revenue		\$94.98	CLOTHING	Revenue		\$94.98	CLOTHING
Revenue		\$2,506.92	COOLER DRINKS	Revenue		\$2,458.55	COOLER DRINKS
Revenue		\$62,186.73	DUES	Revenue		\$58,116.29	DUES
Revenue		\$10,606.81	MANAGEMENT	Revenue		\$10,156.45	MANAGEMENT
Revenue		\$13,590.00	PERSONAL TRAINING	Revenue		\$13,590.00	PERSONAL TRAINING
Revenue		\$10.00		Revenue		\$9.35	
Revenue		\$314.32		Revenue		\$306.45	
Revenue		\$4,319.38		Revenue		\$4,035.88	
Revenue		\$128.34		Revenue		\$128.34	
Revenue		\$2,239.27	SUPPLEMENTS	Revenue		\$2,106.56	SUPPLEMENTS
Revenue		\$1,252.46	TANNING	Revenue		\$1,070.35	TANNING
Revenue		\$290.06	TANNING PRODUCTS	Revenue		\$272.11	TANNING PRODUCTS
Revenue		\$64.17	UNLIMITED	Revenue		\$64.17	UNLIMITED
Cash	\$10,422.68		Club Account ABC Collected	Sales Tax Liability		\$5,544.85	Sales Tax Payable
Cash	\$1,550.00		Club Account Club Collected	Cash	\$10,422.68		Club Account ABC Collected
Cash			Member B Collected	Expenses			
Reimbursements		\$2,245.58	Reimbursements - K&MB FREE UOL	Reimbursements		\$9.53	Reimbursement - Processing Fees
Sales Tax Expense	\$5,544.85		Sales Tax	Reimbursements		\$884.58	Reimbursement
Sales Tax Payable		\$5,544.85	Sales Tax	Cash	\$3,093.84		Total Liability
Cash	\$2,092.84		Total Liability	Pre-Pay Liabilities		\$2,093.84	Total Liability

Sales Tax Liability for pre-pay redemptions has been added to the report as a separate line item, as shown below.

Account Description	Dr.	Cr.	Entry Description	Account Description	Dr.	Cr.	Entry Description
Pre-Pay Liabilities		\$3,093.84	Total Liability	Revenue		\$10.93	ACCESSORIES
Revenue		\$11.00	ACCESSORIES	Revenue		\$141.38	BARS
Revenue		\$149.08	BARS	Revenue		\$568.24	COOLER DRINKS
Revenue		\$581.60	COOLER DRINKS	Revenue		\$4.86	MANAGEMENT
Revenue		\$5.07	MANAGEMENT	Revenue		\$177.50	
Revenue		\$184.42		Revenue		\$1,480.37	
Revenue		\$1,582.02		Revenue		\$160.85	SUPPLEMENTS
Revenue		\$172.19	SUPPLEMENTS	Revenue		\$8.00	TANNING
Revenue		\$9.36	TANNING	Revenue		\$29.39	TANNING PRODUCTS
Revenue		\$32.87	TANNING PRODUCTS	Sales Tax Liability		\$146.09	Sales Tax Payable
Pre-Pay Liabilities	\$2,727.61		Total Redemptions	Pre-Pay Liabilities	\$2,727.61		Total Redemptions



Summary

Two new columns have been added to the Pre-Pay Redemptions section of the report. You can now view **Sales Tax** and **Redemptions Excluding Tax** for each profit center.

Pre-Pay Liabilities/Redemptions			
Pre-Pay Liabilities		Amount	
Amex		\$349.20	
Cash		\$1,083.02	
Debit Card		\$377.57	
Discover		\$60.00	
Mastercard		\$211.11	
Visa		\$967.94	
Write Off		\$45.00	
Total Liability		\$3,093.84	
Pre-Pay Redemptions		Redemptions Including Tax	
ACCESSORIES	\$11.00	\$0.07	\$10.93
BARS	\$149.08	\$7.70	\$141.38
COOLER DRINKS	\$581.60	\$13.36	\$568.24
MANAGEMENT	\$5.07	\$0.21	\$4.86
	\$184.42	\$6.92	\$177.50
	\$1,582.02	\$101.65	\$1,480.37
SUPPLEMENTS	\$172.19	\$11.34	\$160.85
TANNING	\$9.36	\$1.36	\$8.00
TANNING PRODUCTS	\$32.87	\$3.48	\$29.39
Total Redemptions	\$2,727.61	\$146.09	\$2,581.52

CRS 4.3.10 was released on August 6, 2015.

DataTrak Membership Sales

Automated Report Update

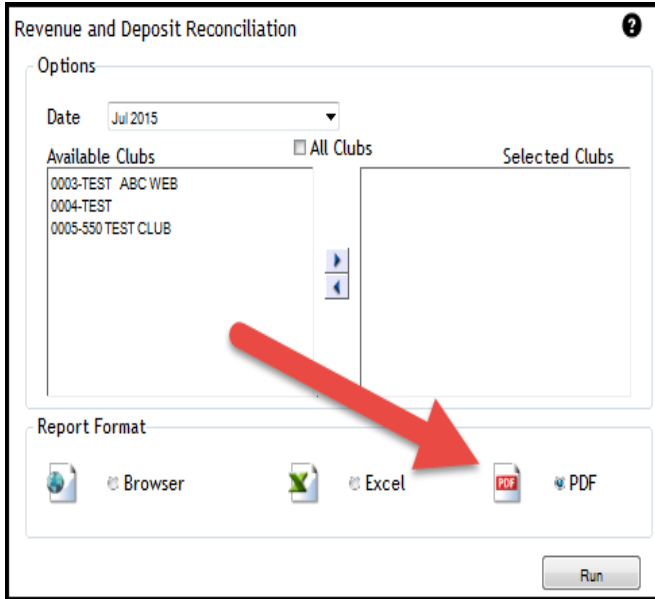
The automated DataTrak Membership Sales report has traditionally provided data from the beginning of the month through the last full business day. This option is still available. A new option has been added so that the automated report can include data for multiple months, rather than being limited to a one-month time frame.

Get started! Contact our CRS Team at CRSRequests@abcfinancial.com to set up automated reports. In your message, please include your username (used to log on to CRS), the name of the report you wish to receive, e-mail addresses to receive the report, requested delivery frequency (daily, weekly, monthly), and the club names and club numbers to be included.

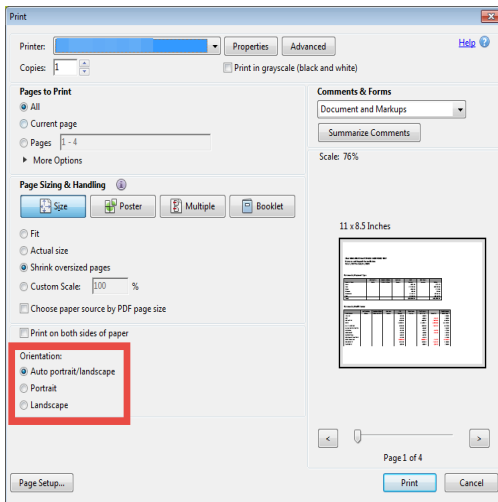
Revenue and Deposit Reconciliation

PDF Format Available

The Revenue and Deposit Reconciliation report can now be generated in PDF format. Select this report format option from the parameters page, as shown below.



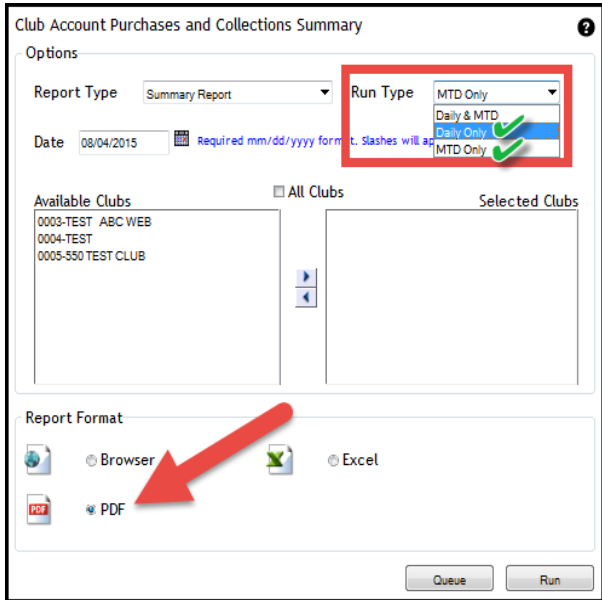
Note: Be sure to set the orientation to **Auto portrait/landscape** when printing. To check this setting, open the **File** menu and select **Print**. Under **Orientation**, select **Auto portrait/landscape**, as indicated in the image below.



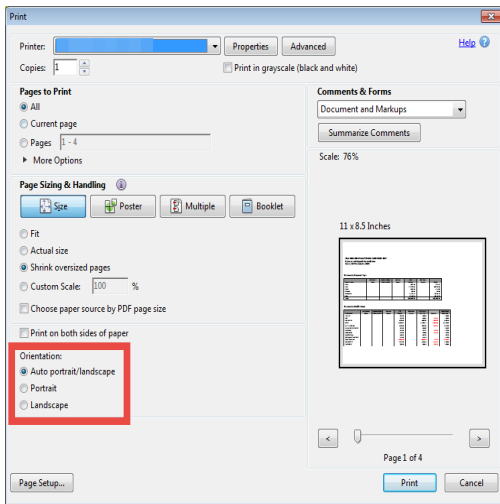
Club Account Purchases and Collections Summary

PDF Format Available

You now have the option to generate the Summary report in PDF format when you select either the **Daily Only** or **MTD Only** run type. The PDF report format becomes available on the parameters page after you select either run type.



Note: Be sure to set the orientation to **Auto portrait/landscape** when printing. To check this setting, open the **File** menu and select **Print**. Under **Orientation**, select **Auto portrait/landscape**, as indicated in the image below.



CRS 4.3.11 was released on August 13, 2015.

MTD Club Account Deposit Summary

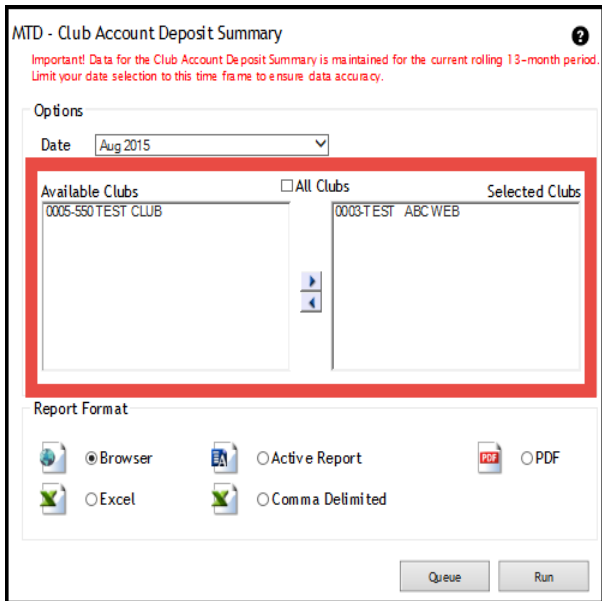
Parameters Page Update

B-08473

Previously, the report included all clubs for which the user had security access. The parameters page has been updated so that you can specify which clubs to include in the report.

When you select the report and the parameters page loads, all available clubs will be included in the **Select Clubs** box by default. You are able to move clubs out of the **Selected Clubs** box by either double clicking a club name or selecting the club name and clicking the backwards-facing arrow between the **Available Clubs** and **Selected Clubs** boxes. You can also clear the **All Clubs** check box to move all back to the **Available Clubs** box.

Here is a sample of the updated parameters page:



MTD - Club Account Deposit Summary

Important! Data for the Club Account Deposit Summary is maintained for the current rolling 13-month period. Limit your date selection to this time frame to ensure data accuracy.

Options

Date: Aug 2015

All Clubs

Available Clubs	Selected Clubs
0005-550 TEST CLUB	0003-TEST ABC WEB

Report Format

Browser Active Report PDF

Excel Comma Delimited

Queue Run



DataTrak Check-Ins

Remote Check-Ins Updates

B-08463

Remote check-ins were previously limited to members checking in from clubs that belong to another ownership group. The report has been expanded to include check-ins from members who belong to an outside club that is within the same ownership group.

Additional remote check-in information has been added to the report. Formerly, the **Remote Check-Ins** section included daily totals. You can now view a member-level list of remote check-ins displaying the date and time each member checked in as well as membership type, when available. The member's home club determines the security settings for membership type and may restrict access to this information. The total number of remote check-ins for the selected time period is provided at the end of the section.

Club Name	Club Number	Member	Last Name	First Name	Check-In Date/Time	Barcode	Member Type
Old							
Remote Check-Ins							
TEST CLUB 1	1111		Remote Check-Ins		08/11/2015		
Total Remote Check-Ins					37		
New							
Remote Check-Ins							
TEST CLUB 1					08/11/2015 06:52:13		Basic
TEST CLUB 1					08/11/2015 07:31:16		Premium
TEST CLUB 1					08/11/2015 08:39:19		Basic
TEST CLUB 1					08/11/2015 08:39:36		Basic
TEST CLUB 1					08/11/2015 09:35:01		Basic
TEST CLUB 1					08/11/2015 20:58:31		Basic
TEST CLUB 1					08/11/2015 21:10:40		Premium
TEST CLUB 1					08/11/2015 21:47:23		Premium
TEST CLUB 1					08/11/2015 22:00:13		Basic
Total Remote Check-Ins							37